

MONTANTE IN ACCIAIO PER CASSONE FISSO

ACCESSORI SERIE BB5 A 2 LEVE

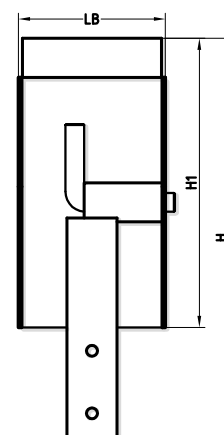
finitura zincatura bianca / galvanising treatment / verzinken behandlung

montante in acciaio per sponde in alluminio

steel pillar for aluminium dropsides

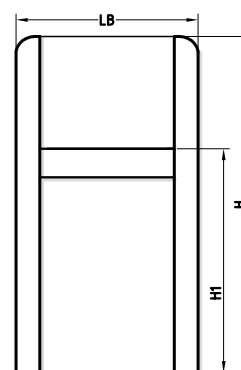
stahl rungen für aluminium bordwände

snodo da rivettare / rivetable hinge / gelenk genietet werden

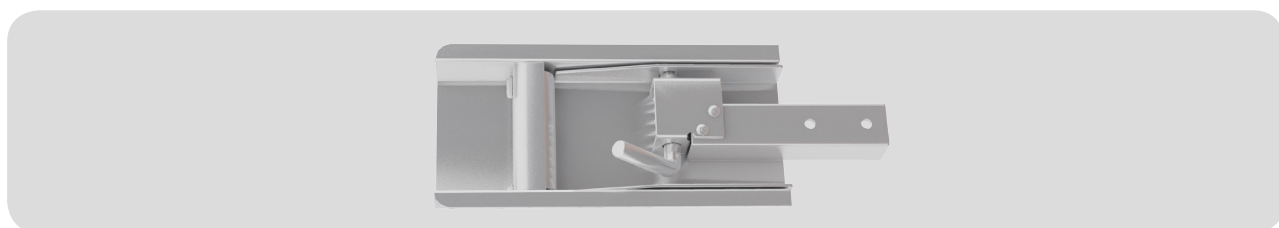


Articolo	Tipo	H	L	S	H1	H2	H3	LB	ST	Peso
06-2755z	snodo zincato da rivettare	255	-	-	186	-	-	94	29	0,960 Kg.

omega per snodo / omega for hinge / omega



Articolo	Tipo	H	L	S	H1	H2	H3	LB	ST	Peso
06-2757z	omega zincata per snodo	240	-	-	186	-	-	130	35	0,850 Kg.



MONTANTE IN ACCIAIO PER CASSONE FISSO

ACCESSORI SERIE BB5 A 1 LEVA

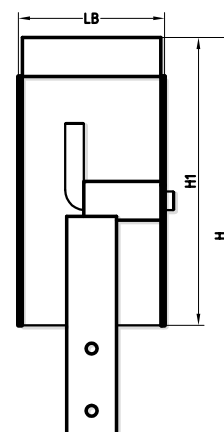
finitura zincatura bianca / galvanising treatment / verzinken behandlung

montante in acciaio per sponde in alluminio

steel pillar for aluminium dropsides

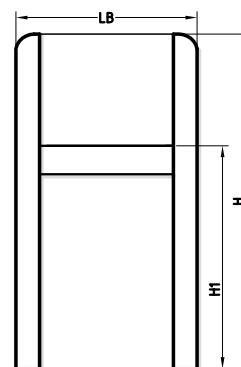
stahl rungen für aluminium bordwände

snodo da rivettare / rivetable hinge / gelenk genietet werden



Articolo	Tipo	H	L	S	H1	H2	H3	LB	ST	Peso
06-27550z	snodo zincato da rivettare	255	-	-	186	-	-	74	29	0,560 Kg.

omega per snodo / omega for hinge / omega



Articolo	Tipo	H	L	S	H1	H2	H3	LB	ST	Peso
06-27570z	omega zincata per snodo	240	-	-	186	-	-	110	35	0,480 Kg.

